



Computers made for Education



Name: veryPC

Subject: 2025 Product  
Brochure



# Who are VeryPC?



At VeryPC, we've proudly supported schools and academies across the UK for over 20 years. As your trusted partner, we're here to help you achieve your educational goals by offering expert advice, reliable hardware, and tailored IT services.

Our computers, made right here in Sheffield, and our partnerships with top-tier brands give you a wide range of options, ensuring you get the quality and performance you need with complete peace of mind.

Make the most of our full suite of factory services — from pre-configuration and installation to recycling and packaging take-back options. We're here to save you time, reduce hassle, and make your IT management simpler.

And if you need ongoing support, our in-house managed IT service desk has you covered, offering both remote and on-site assistance as well as professional services whenever you need them.

**Andy Hopton**  
Managing Director



**Customer First**



**Sustainability**



**Teamwork**



**Integrity**

# Why Choose VeryPC?

We're here to provide a seamless, hassle-free, end-to-end solution for the education sector. With affordable machines built in Sheffield, top-brand equipment, comprehensive warranties, and first-line support, plus friendly Yorkshire advice just a phone call away, we've got you covered.

We believe in building long-term relationships and partnerships based on integrity and trust. That's why our customers stay with us year after year.

From expertly crafted hardware and software to systems solutions, we offer a wide range of options — all backed by our skilled builders, industry-leading partners, and our dedicated in-house IT support team.

Here are just a few reasons why our loyal customers keep coming back:

**"Installation days are so busy, the packaging take back option makes life so much easier for staff"**



**"It's so great that VeryPC can safely remove our old equipment to be refurbished or recycled"**



**"Their deliver to desk option makes installation days so smooth and stress free"**



**"The Bill of Hold option solves our financial planning and purchasing dilemmas"**



**"VeryPC's funding options allow us to make much more affordable decisions"**



**"One of the biggest things for us is the 5 year next-day warranty option"**



**"I love that the team can manufacture and customise the PCs to suit my exact needs"**



**"Dealing with a local Sheffield company, we can always reach them when needed"**





in partner

***acer***  
*for education*

nyPC

ship with

**jwipc**

# Flex Micro

The Flex Micro is a 1-litre powerhouse designed for education that can be easily attached to any VESA-compatible mount or display.

Built with durability and security in mind. Flex Micro is tamper-resistant and comes with a lockable cable cover to keep your system looking neat and avoid any unwanted tampering.

The cable shroud is easily secured with a single security screw.

Add custom branding!



## Specifications:

- Processor:** Core i3/i5 (G12/G14)  
Ryzen 5/7 (7000/8000)
- Memory:** 8GB - 32GB DDR4
- Storage:** 256GB - 4TB SSD
- Network:** 1Gb LAN
- Graphics:** Intel UHD  
AMD Radeon HD
- Operating System:** Windows 11
- Optional:** WiFi 6

Pair a Flex Micro with an optional height-adjustable stand for a powerful, ergonomic, secure micro PC, perfect for any classroom.



Intel 12th &  
14th Gen



Ryzen 5/7



Lockable  
cable shroud



Mounting  
options

# Flex Mini



The Flex Mini is a robust, durable, ultra-small form factor (USFF) computer built to withstand the rigors of the classroom environment, ensuring longevity and uninterrupted learning.

The Flex Mini offers versatility like no other. It comes in two configurations: an All-In-One setup with an optional monitor mount kit or a sleek desktop tower, catering to your space and teaching needs.

Customise your Flex Mini with a range of optional extras, including security screws for peace of mind, a lockable cable shroud for added protection, a dedicated GPU for enhanced performance, and a height-adjustable mount for ergonomic convenience.



Intel 12th &  
14th Gen



Ryzen 5/7



Optional  
cable shroud



Robust &  
Durable

## Specifications:

**Processor:** Core i3/i5/i7 (G12/G14)  
Ryzen 5/7 (4000/5000/8000)

**Memory:** 8GB - 64GB DDR4

**Storage:** 256GB - 4TB SSD

**Network:** 1Gbps LAN

**Graphics:** Intel UHD  
AMD Radeon HD

**Operating System:** Windows 11

**Optional:** WiFi 6

Add a height-adjustable stand, cable cover, and GPU for a powerful, secure, and ergonomic setup.



# Flex Slim

The Flex Slim is a robust and durable “All-In-One” SFF (small form factor) PC. The Flex Slim has a lockable cable shroud, and paired with its VESA mounting bracket, it becomes space-saving and secure.

The “All-In-One” configuration allows you to adjust in all directions, tilt, swivel, rotate, and height-adjust.

The Flex Slim has full desktop performance in a slim, ergonomic, and adjustable package. With plenty of mounting features and extras, you can make your Flex Slim fit your education needs.



Intel 12th & 14th Gen



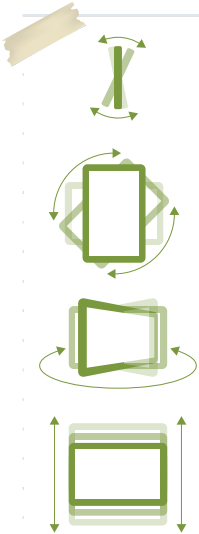
Ryzen 5/7



Lockable cable shroud



Robust & Durable



## Specifications:

**Processor:** Core i3/i5/i7 (G12/G14)  
Ryzen 5/7

(4000/5000/8000)

**Memory:** 8GB - 64GB DDR4

**Storage:** 256GB - 4TB SSD

**Network:** 1Gb LAN

**Graphics:** Intel UHD

AMD Radeon HD

**Operating System:** Windows 11

**Optional:** WiFi 6



# Broadleaf Mini

The first product in our Broadleaf Range and our first step towards a greener product lifecycle. Broadleaf Mini reduces the environmental impact of desktop computing, giving you the latest innovations and design with a reduced carbon footprint across the manufacturing process and whole product lifecycle.

Broadleaf Mini has been designed in partnership with Intel and our manufacturing partners JWIPC in a joint effort to reduce the environmental impact through design, manufacturing, and use.



## Specifications:

**Processor:** Core i5  
**Memory:** 8GB - 32GB DDR4  
**Storage:** 256GB - 4TB SSD  
**Network:** WiFi 6 / 1Gb LAN  
**Graphics:** Intel UHD

**Operating System:** Windows 11

The Broadleaf Mini uses a simple modular design, making it easy to assemble, service, replace parts, disassemble and separate.



Intel 12th  
Generation



Leading  
sustainability



Modern  
security



35% less  
power draw\*

*\*than a typical desktop computer*

# Aspect Nano

The Aspect Nano is a powerful but compact mini-computer featuring the latest Intel hardware with Iris Xe graphics, capable of driving up to four concurrent 4K displays. Aspect Nano is a palm-sized powerhouse ready to tackle any task thrown at it.

Based on the Intel NUC (Next Unit of Computing) platform, the Aspect Nano is a quality alternative manufactured by our partner JWIPC. Get all the benefits of a NUC without the premium price point.



Intel 12th & 13th Gen



High performance



Quad Displays



Iris XE Graphics



## Specifications:

**Processor:** Core i5 (G12/G13)

Core Ultra 5

**Memory:** 8GB - 32GB DDR4

**Storage:** 256GB - 4TB SSD

**Network:** WiFi 6 / 1Gb LAN

**Graphics:** Intel Iris Xe

**Operating System:** Windows 11

# Aspect Micro



Small but mighty, Aspect Micro delivers desktop class performance in a fraction of the size. With multiple VESA mounting options, this little powerhouse is a great way to retain desk space and breeze through the working day.

The Aspect Micro can be mounted to any VESA compatible mount or stand. It can be fixed under a desk, on a gas arm or on a height-adjustable monitor arm, and supports output to an additional monitor for improved productivity.

## Specifications:

**Processor:** Core i3/i5 (G12/G14)  
Ryzen 5/7 (7000/8000)

**Memory:** 8GB - 64GB DDR4

**Storage:** 256GB - 4TB SSD

**Network:** 1Gb LAN

**Graphics:** Intel UHD  
AMD Radeon HD

**Operating System:** Windows 11

**Optional:** WiFi 6



Intel 12th &  
14th Gen



Ryzen 5/7



Space  
Saving



Included  
VESA mount

# Aspect Mini

Your choice!



The Aspect Mini is a powerful and compact PC designed specifically for use in the education sector. Its sleek, modern design features zero bezels, giving it a clean and professional look and making it easy to brand with your school logo.

In addition, the tamper-resistant front panel can be secured with additional security screws, providing added peace of mind that your computer is safe from a mishap. Designed to save you space as a tower or horizontal under your monitor.



Intel 12th &  
14th Gen



Ryzen 5/7



No Bezels



Tamper-  
resistant



## Specifications:

**Processor:** Core i3/i5/i7 (G12/G14)  
Ryzen 5/7  
(4000/5000/8000)

**Memory:** 8GB - 64GB DDR4

**Storage:** 256GB - 4TB SSD

**Network:** 1Gb LAN

**Graphics:** Intel UHD  
AMD Radeon HD

**Operating System:** Windows 11

**Optional:** WiFi 6

# Aspect Tower

The modern classic, Aspect Tower is a clean, simple (midi) tower with plenty of room for upgrades. Featuring a no-bezel design, our widest range of customisation options in the Aspect family and lots of real estate to brand it and *make it yours!*

The Aspect Tower is durable and features a tamper-resistant front shield secured with security screws from the inside. Designed to give you a range of choices on CPU, Motherboard, GPU, and PSU.

Brandable, simple, versatile.



## Specifications:

**Processor:** Core i3/i5/i7 (G12/G14)  
Ryzen 5/7  
(4000/5000/8000)

**Memory:** 8GB - 64GB DDR4

**Storage:** 256GB - 4TB SSD

**Network:** 1Gb LAN

**Graphics:** Intel UHD  
AMD Radeon HD

**Operating System:** Windows 11

**Optional:** WiFi 6/NVIDIA RTX  
Graphics



Intel 12th &  
14th Gen



AMD Ryzen  
5/7



Simple,  
clean look



Tamper-  
resistant

# Aspect A10 24"

The Aspect All-In-One features a fully adjustable stand for personalised viewing and near-silent operation. With its space-saving design, and slim bezel it streamlines your workspace while offering a clutter-free, efficient computing experience. It's the ultimate in productivity meets style.

Choose to enjoy your Aspect All-In-One on a height-adjustable stand or mounted to any VESA compatible mount solution, and paired with a second monitor you have a seriously sleek and productive setup.



## Specifications:

**Processor:** Core i3/i5/i7 (G12/G14)  
AMD Ryzen 5/7 (7000/8000)  
**Memory:** 8GB - 64GB DDR4 / DDR5  
**Storage:** 256GB - 4TB SSD  
**Network:** 1Gb LAN/WiFi 6  
**Graphics:** Intel UHD/AMD Radeon HD  
**Operating System:** Windows 11  
**Optional:** WiFi 6



Intel 12th &  
14th Gen



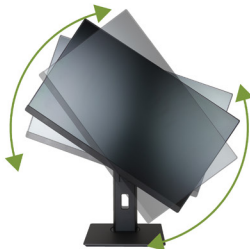
Ryzen 5/7



Space  
Saving



Adjustable  
Stand



# Aspect A10 24" Touch

The Aspect All-In-One Touch takes the convenient All-In-One package but adds 10-point capacitive touch functionality, a versatile “Z style” arm that allows you to swivel, twist, tilt, and lower the screen into an almost tablet-like configuration.

The robust design and ability to have the touch screen in landscape, portrait, or “tablet mode” makes the Aspect All-In-One Touch perfect for interactive learning in the classroom.



## Specifications:

**Processor:** Core i3/i5/i7 (G12/G14)

**Memory:** 8GB - 64GB DDR4

**Storage:** 256GB - 4TB SSD

**Network:** 1Gb LAN/WiFi 6

**Graphics:** Intel UHD

**Operating System:** Windows 11

**Optional:** WiFi 6



Intel 12th &  
14th Gen



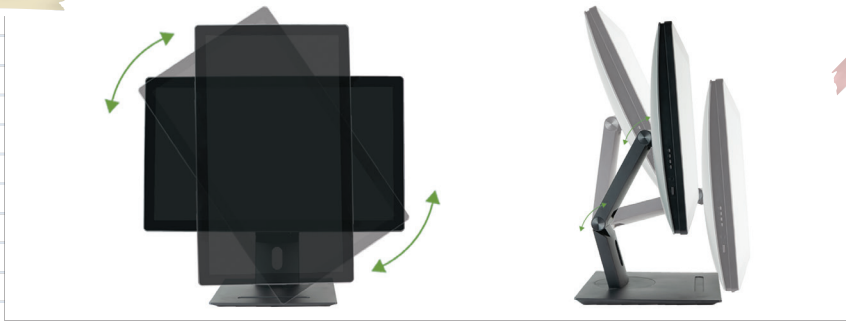
Pop-up  
Webcam



Multi-touch  
display



Heavy-duty,  
Z-stand



# Thinbook

Meet the Thinbook, where sleek design meets performance. The Thinbook is designed to fit seamlessly into your daily life, whether you're shaping young minds, running a business, or just keeping up with your everyday tasks.

Perfect for teachers, business users, or just about anyone who appreciates quality and reliability in their tech. Thinbook is more than just a laptop; it's your daily companion in your journey towards success.



## Specifications:

- Processor:** Core i5
- Memory:** 8GB - 32GB DDR4
- Storage:** 256GB - 4TB SSD
- Network:** WiFi 6/ 1Gb LAN
- Graphics:** Intel Iris Xe
- Operating System:** Windows 11



Intel 13th  
Generation



All day  
battery



Modern  
Connectivity



Durable  
MIL 510

*14" Thinbook details available on request. Please email [info@very-pc.co.uk](mailto:info@very-pc.co.uk) or call us on 0114 321 8609.*



# Flexbook

The Flexbook 14 is a semi-rugged, compact, and powerful laptop built for all-day use and perfect for students, teachers, and business users on the go.

Flexbook 14 keeps going with a 55Wh battery, and thanks to its ultra-efficient components, you can expect over 10 hours of use with demanding modern office applications.



## Specifications:

- Processor:** Ryzen 5
- Memory:** 8GB - 32GB DDR4
- Storage:** 256GB - 4TB SSD
- Network:** WiFi 6E / 1Gb LAN
- Graphics:** AMD Radeon HD
- Operating System:** Windows 11



AMD  
Ryzen 5



All-day  
Battery Life



Compact  
and Resilient



Modern  
Security

The Flexbook 14 laptop includes USB-C PD up to 65W, a backlit keyboard, and a 180-degree hinge. Upgrade to 4G LTE, enjoy the FHD IPS anti glare screen, and experience fast connectivity with WiFi 6. All the essentials for a seamless experience.

# ARENA PLAYER 1

Ready Player One!

Arena Player One is the ideal entry point into the esports platform. Featuring the latest hardware, compact size, superb customisation options, and industry-leading VeryPC warranty. Dominate in all the popular esports titles including Valorant, League of Legends, Apex Legends, Dota 2, Fortnite, Rocket League and more.

Arena Player One is perfect for 1080p gaming at 60+ FPS.



## Specifications:

**Processor:** Core i5/i7 (G12/G14)  
Ryzen 5/7  
(5000/7000/9000)

**Memory:** 16GB - 64GB DDR4/DDR5

**Storage:** 256GB - 4TB NVMe

**Network:** 1Gb LAN

**Graphics:** NVIDIA GeForce RTX  
30/40/50 Series

**Operating System:** Windows 11

**Optional:** WiFi 6E

VeryPC helped local Championship football club, Sheffield Wednesday, create the UK's first pitch-facing esports suite, allowing them to build a sustainable infrastructure for the growth of esports.

Installing 18 x ARENA Player One - entry level gaming PCs has enabled the club to engage, serve and have positive impact within the local community.



# ARENA PLAYER 2

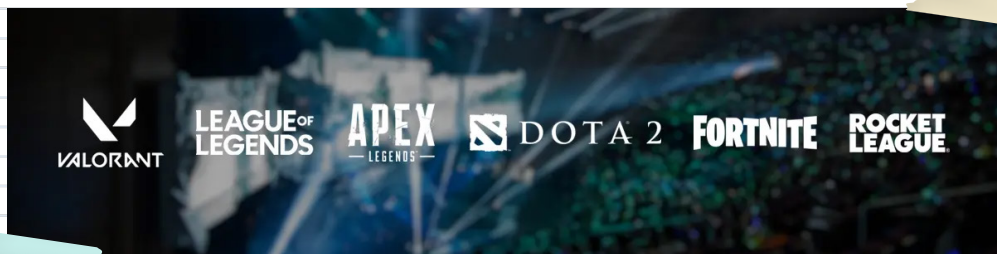
Ready Player Two!

Arena Player 2 features the latest hardware, dazzling RGB lighting, superb customisation options, and industry-leading VeryPC warranty. Player Two is well equipped to tackle the latest AAA and esports titles at ultra-high framerates.

Arena Player Two is perfect for 1080p esports and AAA gaming at 120+ FPS.

## Specifications:

<b>Processor:</b>	Core i5/i7 (G12/G14) AMD Ryzen 5/7 (7000/9000)
<b>Memory:</b>	16GB - 64GB DDR4/ DDR5
<b>Storage:</b>	256GB - 4TB NVMe
<b>Network:</b>	WiFi 6E/2.5Gb LAN
<b>Graphics:</b>	NVIDIA GeForce RTX 30/40/50 Series
<b>Operating System:</b>	Windows 11



Considered the world's fastest-growing sport, esports is an exciting team activity that links to computing education, STEAM (Arts) subjects, and the development of digital skills.

We're supporting educational institutions with hardware specifically designed for esports. In no time at all, you'll be setting up your school's first competitive team and developing new career paths for your students.

# Acer for Education

Acer is all about making technology accessible and straightforward, especially in the world of education.

From sturdy laptops and desktop PCs to versatile tablets and clear, vibrant monitors and projectors, Acer covers all bases. Whether you're a student needing reliable tech for your studies, or an educator looking to bring lessons to life, Acer's products are designed to help you discover more comfortably and efficiently.

With Acer, learning is not just easier; it's more enjoyable too.



**acer**  
for education

## For the Teachers



### Acer Chromebook SPIN 514

### Acer TravelMate P4 spin 14

**Processor:** MTK528

**Memory:** 4GB

**Storage:** 64GB eMMC

**Network:** WiFi 6

**Graphics:** Mali-G52

**Connectivity:** 2xUSB-C, 1xUSB-A

**Display:** 1366 x 768 HD IPS

**Operating System:** Chrome OS

**Processor:** Intel N100

**Memory:** 4GB-8GB

**Storage:** 64GB-128GB eMMC

**Network:** WiFi 6E

**Graphics:** Intel UHD

**Connectivity:** 2xUSB-C (Display&PD),

2xUSB-A 3.2

**Display:** 1366 x 768 @ 60 Hz

**Operating System:** Chrome OS

# For the Students



**Acer Chromebook 311**

**Processor:** MTK528  
**Memory:** 4GB  
**Storage:** 64GB eMMC  
**Network:** WiFi 6  
**Graphics:** Mali-G52  
**Connectivity:** 2xUSB-C, 1xUSB-A  
**Display:** 1366 x 768 HD IPS  
**Operating System:** Chrome OS



**Acer Travelmate spin B3**

**Processor:** N100/N200  
**Memory:** 4-8GB  
**Storage:** 128GB-256GB  
**Network:** WiFi 6E  
**Graphics:** Intel UHD  
**Connectivity:** 1 x USB-C (Display&PD),  
2 x USB-A 3.2  
**Display:** 1920 x 1080 FHD IPS  
Touchscreen  
**Operating System:** Window 11PRO Education

# In the IT suite



**Acer Chromebox CX15**

**Processor:** Celeron 7305, Core i3 / i5  
**Memory:** 4 - 8GB  
**Storage:** 32-256GB  
**Network:** Wifi 6E / 2.5GB LAN  
**Graphics:** UHD/Iris XE  
**Connectivity:** 4 x 3.2 Type A / 2 x USB4  
TYPE C  
**Display:** 2 x HDMI  
**Operating System:** Chrome OS

# OPS

The Open Pluggable Specification (OPS) is the industry standard for connecting computer devices to large flat panel/interactive displays via a single universal internal slot.

With no need for any cables, the VeryPC OPS System simply plugs into a single slot in the back of any OPS compatible display (both touch and non-touch), instantly converting your big screen into a giant all-in-one Windows® PC.



OPS S104C

**Processor:** Core i5 (12th & 13th Gen)  
**Memory:** 16GB - 32GB DDR4  
**Storage:** 256GB - 4TB NVMe  
**Network:** WiFi 6 / 1Gb LAN  
**Graphics:** Intel Iris Xe



OPS S124

**Processor:** Core Ultra 5/7  
**Memory:** 16GB - 32GB DDR4  
**Storage:** 256GB - 4TB NVMe  
**Network:** WiFi 6 / 1Gb LAN  
**Graphics:** Intel Arc

All available with Windows 11 Pro, IoT or NO OS

# Signage Players



H068

**Processor:** Intel Celeron J6412  
**Memory:** 4GB  
**Storage:** 128GB  
**Network:** WiFi 5 / 1Gb LAN  
**Graphics:** Intel HD



H085

**Processor:** Rockchip RK3568  
**Memory:** 4GB LPDDR4  
**Storage:** 16GB eMMC  
MicroSD Card upto 256GB  
**Network:** WiFi 6 / 1Gb LAN  
**Graphics:** Mali-G52 2EE



K105F

**Processor:** Intel Core i5 1235U  
**Memory:** 4-32GB DDR4  
**Storage:** 128GB-4TB  
**Network:** WiFi 6 / 2 x 1Gb LAN  
**Graphics:** Intel Iris Xe



K115

**Processor:** Intel Core i5 1235U  
AMD Ryzen 5 7350U  
**Memory:** 16GB - 32GB DDR4  
**Storage:** 256GB - 4TB NVMe  
**Network:** Dual 2.5Gb LAN  
WiFi 6 / 4G/LTE (Optional)  
**Graphics:** Intel Iris Xe / Radeon HD

# Our Factory Services

Over the years, we've become known for the phrase "nothing is standard", which doesn't just apply to the inside of our machines. We want you to have the best experience possible, so we go above and beyond to ensure that's precisely what happens. The way we see it, it's our job to make your job much easier.

From the second you get in touch with us, no matter the product or service required, we'll be with you every step of the way. That's why we offer a whole host of additional services that will enhance the look and feel of your new IT equipment.

## Customised BIOS



We can deploy a customised BIOS at factory to include custom settings including password, boot logo, boot order, and other settings to reduce your configuration time.

## Custom operating system imaging



By deploying your custom OS image, we can pre-install your applications and deliver end-user ready systems direct from the factory.



## Microsoft Autopilot



We can enrol your devices direct from factory in Microsoft Intune or alternatively, we can provide you with the hardware hashes in a convenient format for self-enrolment

## Custom Branding



We offer custom branding services for your IT hardware using full-colour, hard-wearing vinyl skins to protect your device from bumps and scrapes, showcasing your organisation's personality.





## Asset Tagging



We can supply standard asset tags with your company name and specified asset numbers, or you can ship us your existing tags and we can apply those, direct at factory.



## Security options



We can supply a range of security options including tamper-proof security screws and other physical security options to secure your new hardware.

## Deliver to Desk



Our service team can deliver, unbox, cable, and configure your new hardware for immediate use by you and your team.



## Buy with confidence

We're proud of our work here at VeryPC. Much care and attention go into every product that leaves our factory, from meticulous construction to being boxed and ready to ship. Annoyingly though, electronic components are not infallible. When a rare fault we're responsible for happens, your inclusive VeryPC warranty ensures that your computer is either fixed or replaced at no extra cost. Our warranties range from a standard 1-year collect and return through to 5-year warranty options, and our team is on hand to get the best guarantee that works for your school. But if something's gone wrong, we'll do the hard work. That's a promise.

# Shape the Future

## Get affordable devices with Microsoft's Shape the Future scheme

We're constantly surprised at how many schools aren't aware of the Shape the Future scheme, which allows schools to purchase devices with discounted Windows licences from Microsoft partners - that's us!

Any UK school with a valid UK school email address is eligible and these devices can be used by administrators, teachers and of course students. A key aspect of our Named Partner relationship with Microsoft is offering access to affordable devices to any qualifying primary or secondary school and that's something we're very proud of. If your school isn't taking advantage of the scheme, be sure to get in touch with us.



## How does the process work?

It's a relatively simple process to get started with the Shape the Future scheme and should you encounter any issues, our team is on hand to run through the process with you.

All you need to do is verify your school email address and register for the programme by using the electronic form on the Microsoft website. By registering your school's eligibility, you'll then qualify to purchase discounted Windows licences from VeryPC.

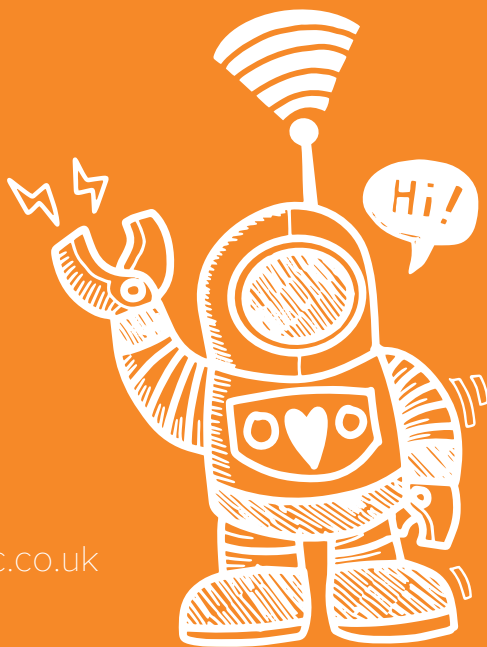
We're even able to send you an email template to send directly to Microsoft, should you encounter any issues. We won't leave you stranded!

Read more and get in touch to see how 'Shape the Future' could save you money.





Computers made for Education



[very-pc.co.uk](http://very-pc.co.uk)