

Aspect Micro

Aspect Micro packs desktop-level power into a compact 1-litre chassis. It mounts neatly out of sight with multiple VESA options, includes a cable cover to keep desks tidy, and features tamper resistance for added peace of mind.



Cable Cover



Small footprint



VESA Mountable



Tamper Resistant



Mountable
Power Supply

Configurations

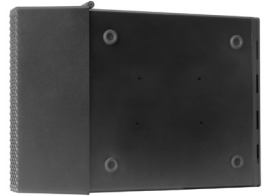
Standalone Desktop



Vertical



Horizontal



Cable Cover

VESA Mounted



PRO Stand



Back of Monitor



Under Desk / On Wall

Intel LGA 1700

Performance

Processor	Intel Core i3 12100 - 4C/8T Intel Core i5 12400 - 6C/12T Intel Core i7 12700 - 8C/4E/20T Intel Core i3 14100 - 4C/8T Intel Core i5 14400 - 6C/4E/16T
Memory	Up to 32GB DDR4 @ 3200MHz
Storage	Up to 4TB M.2 NVMe
Graphics	Intel UHD 730 (Core i3 & i5) Intel UHD 770 (Core i7)
Operating System	Windows 11 - Home / Pro / Education No operating system - Optional

Physical

In the box	Aspect Micro System VESA Mount Bracket Cable Cover Desktop Base Stand Power Supply with Cable and Mount Bracket
Dimensions	187 x 188 x 40mm
Weight	Net Weight - 1.2Kg (Approx)

Warranty

Standard	1 year collect and return
Optional Upgrades	Up to 5 years total cover Extended Service Plan

Optional Extras

Upgrades	Wi-Fi 6 and Bluetooth 5.2 Height-adjustable VESA stand with mini PC mount
----------	--

Connectivity

Networking	Realtek 1Gbps LAN
Front IO	1 x USB 3.0 (Type-C) 1 x USB 3.0 (Type-A) 1 x USB 2.0 (Type-A) 1 x Audio In/Out (3.5mm Jack)
Rear IO	2 x USB 3.2 Gen 2 (Type-A) 2 x USB 2.0 (Type-A) 1 x 1Gb LAN (RJ45) 2 x 3.5mm audio 1 x HDMI 2.1 1 x DisplayPort 1.4

System

Audio	Realtek HD Audio
TPM	Intel PTT (Firmware)
Power Supply	External 120W brick (C5 / 19.5V / 6.15A / 5.5mm x 2.5mm)

Power Use

Off	1.00w
Sleep	2.00w
Idle	16.94w
Full Load	98.46w
Typical Useage	34.00w

Test system spec : Core i5 12400 / 16GB / 256GB /Win 11PRO

Please note that the system images are examples and may differ based on chosen specifications. Some products shown in system images may be subject to availability. Please contact our team if you have any questions regarding configuration.